



Dr. James V. Aquavella

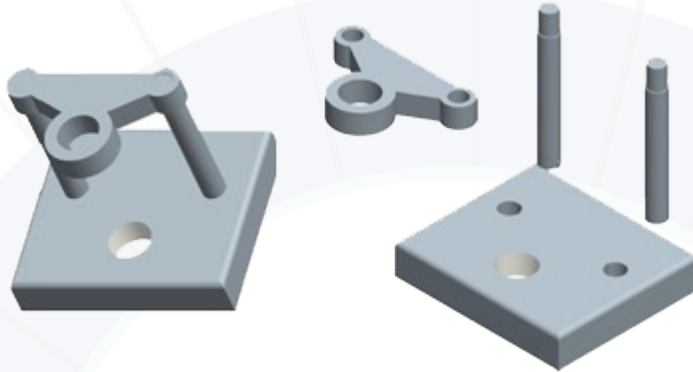
Catherine E. Aquavella
Distinguished Professor
of Ophthalmology
Director Ocular Surface
Laboratory@
University of Rochester Flaum
Eye Institute

Aquavella K-Pro System

Designed by Dr. James V. Aquavella

ASICO is pleased to introduce a new system which is modeled after the unique unit designed and utilized by Dr. James Aquavella for decades in his surgery and training of fellows. The newly designed set can accommodate a variety of corneal surgical techniques

Cornea punch units are utilized by cornea surgeons to prepare donor tissues for a variety of surgical procedures. The punch unit is designed with ease of cleaning and sterilization in mind, simplicity and to avoid the potential for mechanical failure. The punch set can be easily disassembled, sterilized and stored.



*Aquavella Corneal Punch set - 3D rendering of the device
Punch is designed for easy disassembly, cleaning and sterilization AE-8225*

The unique construction enables constant visualization of the donor tissue. The targeted base (tissue holders) facilitates centration, while pre-cut grooves to match each trephine diameter prevent bending and damage to both tissue and disposable trephine blade.

Steel stud for tissue centration



*Tissue holder designs to specific size - Designed for sizes 7mm, 8mm, 9mm, 10mm, 11mm
Cut out in the tissue holder prevents damage to the trephine blades
(AE-8276, AE-8277, AE-8278, AE-8279, AE-8280)*

The matched set of trephine holders and bases are sized in 1.0 mm increments from 7 to 11 mm providing a number of options which can be selected to match the pathology and specific surgical technique.



See through hole for visualization of the tissue during trephination

AE-8270

AE-8271

AE-8272

AE-8273

AE-8274

AE-8275

Trephine holder with see-thru hole ideal for centration- Designed for 7mm, 8 mm, 8.5mm, 9 mm, 10 mm, 11mm



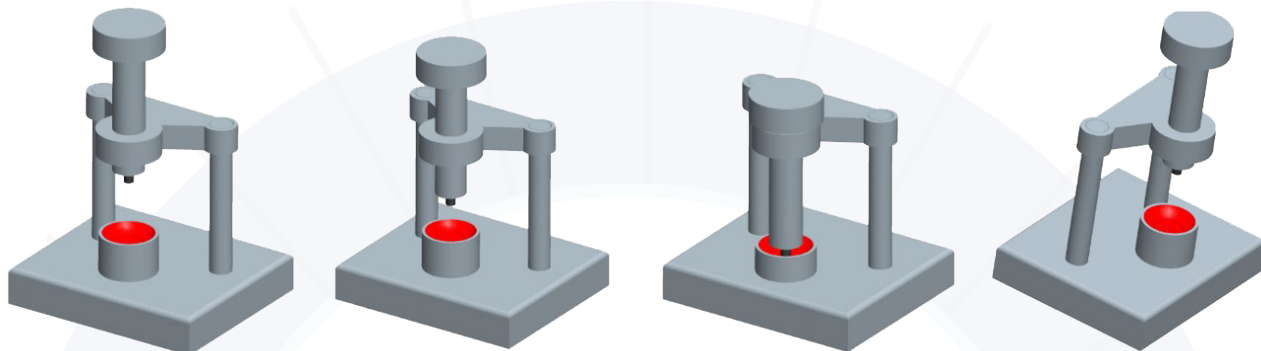
26 Plaza Drive Westmont, IL 60559
Ph: +1-630-986-8032
Fax: +1-630-986-0065
E-mail: info@asico.com
www.asico.com

Aquavella K-Pro System

Designed by Dr. James V. Aquavella

The trephine holder works hand-in-hand with the Aquavella Corneal Punch set:

- A unique trephine holder with a 3mm trephine is used to punch the donor tissue and create a centration point on the tissue
- Every tissue holder is designed with a 3mm metal stud to hold the punched donor tissue in place, such that the specific sized trephine can be used to achieve the final cut
- The trephine holders with the see-thru center assist in the process of trephination



Working of the Aquavella Corneal Punch set, trephine holder and tissue holder

The kit includes four instruments specifically designed to assist in initial or secondary keratoprosthesis surgery. A grooved donor spoon is useful in removing the donor tissue from the trephine base. A special fine toothed forceps for secure grasping to the prosthesis during assembly



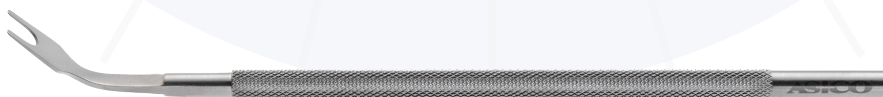
Special fine toothed forceps (AE-4122)



In the set of instruments are a pair of angulated serrated rakes to enable stabilization of the implanted KPro during repair procedures



Angulated serrated rake (AE-2482)



Grooved donor spoon (AE-2481)